

POLLUTION INCIDENT RESPONSE MANAGEMENT PLAN

WJ Murdoch and Co Pty Ltd
360 Dolomite Road, Mount Knowles

EPL 20952



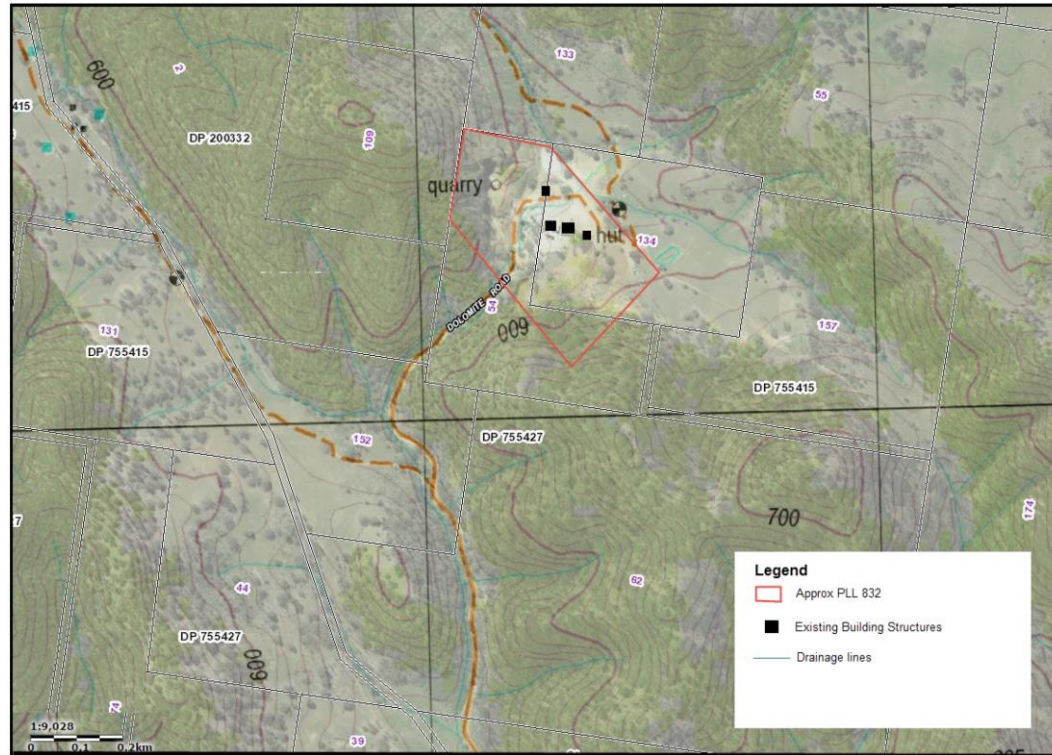


Figure 1: Environmental Protection Licence Area (EPL 20952)

Permanent infrastructure is located at the Mt Knowles site however the administration office for WJ Murdoch and Co is located at the affiliated MDL Buckaroo Quarry/processing plant (Mudgee Dolomite and Lime Pty Limited). The subject quarry is contained within Lots 54 and 134 DP 755415, being 360 Dolomite Road, Mt Knowles. The Mt Knowles site has three distinct operational components i.e.

- 1) The mill infrastructure for processing and other crushing/screening and stockpiling activities (crushing, grinding or separating);
- 2) Active extractive and mining areas- two pits (land-based extractive activities and mining for minerals);
- 3) Activities that occur outside these two key components include: rehabilitation areas, surface water management and use and maintenance of the haul road.

Pollution Hazards – MT KNOWLES

A pollution incident is required to be notified if there is a risk of ‘material harm to the environment’, which is defined in section 147 of the POEO Act.

“(a)...harm to the environment is material if:

*(i) it involves actual or potential harm to the health or safety of human beings or to ecosystems that is not trivial, or
(ii) It results in actual or potential loss or property damage of an amount, or amounts in aggregate, exceeding \$10,000 (or such other amount as is prescribed by the regulations), and*

(b) loss includes the reasonable costs and expenses that would be incurred in taking all reasonable and practicable measures to prevent, mitigate or make good harm to the environment.”

MDL management have undertaken a review of activities and identified the major hazards associated with WJ Murdoch and Co’s operations.

The following hazards have been identified as key issues requiring consideration in this PIRMP.

- Unauthorised discharges from water management system, including sediment laden runoff.
- Hazardous material storage risk of site contamination.

HAZARD	EXAMPLE	HUMAN / HEALTH / OR ENVIRONMENT	LIKELIHOOD	EVENTS THAT INCREASE LIKELIHOOD	PRE-EMPTIVE ACTIONS
Dust	Haulage on Dolomite Road (unsealed)- Haulage route conditions deteriorate below the standard acceptable and cause safety risk and excessive dust.	Health/Environment	Low	Hot dry windy conditions; Water cart not operating effectively or dust suppression.	Dust Control Measures adopted and implemented (TARP). Maintain road condition.

HAZARD	EXAMPLE	HUMAN / HEALTH / OR ENVIRONMENT	LIKELIHOOD	EVENTS THAT INCREASE LIKELIHOOD	PRE-EMPTIVE ACTIONS
Excessive dust	Blast conditions	Human Health	Low	Blasting in windy conditions	No blasts when in high wind and with contractors' control on proceeding.
Sediment discharge	Discharge to waters of untested/treated stormwater	Environment	Low	(Within the Mt Knowles lease area there are two first order watercourses draining to unnamed third order watercourse (which follows Dolomite Road alignment somewhat). Not maintaining sediment basin/s in accordance with EPL; Limited staff resourcing and training for environmental monitoring plan.	The basins are to be drained or pumped out as necessary to maintain the basin's design capacity within 5 days following rainfall.
Groundwater pollution				Mining operations result in the interference of groundwater and exposure to spills etc occur.	No Gwater interception. Keep fuels etc out of pit catchment.
Native habitat disturbed	Woodland on slopes in vicinity to work areas at risk of disturbance	Environment	V Low	Operating outside of approved areas.	Strict disturbance limits set with bunds/fencing.
Fire	Any smoke affecting populated area (rural residents in Mt Knowles & Buckaroo locality); dark, acrid smoke	Environment	Low	Equipment fault sparks fire;	Maintenance program for equipment; WHS checks; Keep appropriate fire control equipment.
				Uncontrolled detonation of explosives on site.	Follow Blast Management Protocols for safety; Engage trained contractors for control of events.
Spill of fuels and chemical	Not contained in a bunded area	Environment	Low	Fuel bund not maintained; Fuel and chemicals not stored in bund	Manager to check fuel and chemical storage regularly.

HAZARD	EXAMPLE	HUMAN / HEALTH / OR ENVIRONMENT	LIKELIHOOD	EVENTS THAT INCREASE LIKELIHOOD	PRE-EMPTIVE ACTIONS
	Reaches drain or waterway whether or not there is standing or flowing water.			Old drums / waste oil not stored in bund Careless use of fuels and chemicals on site	Training on fuel and chemical use protocol.
	Dust over Buckaroo Road causing traffic hazard	Human Health	Low	Hot dry windy conditions; Water cart not operating effectively or dust suppression on stockpiles. Blasting in windy conditions	Dust Control Measures adopted and implemented (TARP) No blasts when in high wind and with contractors control on proceeding.
Blast fume	Fume cloud leaves the premises not dispersed	Human Health	Low	Incorrect explosive composition Moisture in blast holes	Explosive supplier/contractor ensures appropriate formulation; Check moisture levels – use contractor management procedures.
Incorrect disposal of waste	Chemical or putrescible waste disposed of on site	Human Health/ Environment	V Low	Failure of regular waste disposal; or unauthorised access and dumping.	Ensure waste disposal procedures followed; Security fencing /signage provided to site.
Excessive Noise	Excessive noise affecting noise sensitive location (nearest resident)	Human Health	Low	Plant and equipment not operated correctly. Blast procedures not followed.	Training for operating to reduce noise. Carry out blasts during licenced time periods and appropriate meteorological conditions. Carry out blast notifications to neighbours. Noise levels and impacts during haulage, processing operations

HAZARD	EXAMPLE	HUMAN / HEALTH / OR ENVIRONMENT	LIKELIHOOD	EVENTS THAT INCREASE LIKELIHOOD	PRE-EMPTIVE ACTIONS
					managed with strict hours of operation and haulage times.

The EPL has one licensed discharge point that is to be monitored in accordance with the EPL conditions (frequency of monthly during discharge); i.e. Point 1 – discharge and monitoring point at sediment basin in lowest point of premises.

Inventory of Pollutants

POLLUTANT	MAXIMUM QUANTITY	LOCATION
Fuel	50,000L	Self Bunded tank at adjacent shed (see plan)
Grease and Oil	400L	Dedicated Bunded Area near fuel store
Cleaning Fluids	Nil	<i>Taken to site from Buckaroo MDL facility as required</i>
Flocculants	Nil	<i>Taken to site from Buckaroo MDL facility as required</i>
Pesticides/Herbicides	Nil	<i>Taken to site from Buckaroo MDL facility as required</i>



Figure 2: Site Plan

Safety Equipment

SAFETY EQUIPMENT / DEVICE	FOR (Pollution Type)	LOCATION
MSDS (Material Safety Data Sheets)	Chemical or fuel spills.	Office/Crib Room
Spill Kit <ul style="list-style-type: none"> • 2 bags of absorbent material; • 100 absorbent pads; and • 2 absorbent booms. 	Chemical or fuel spills.	Office/Crib Room adjacent Dedicated Bunded Area
PPE	Any	Personal Equipment issued by Company; Crib Room, Vehicles
Fire Extinguishers	Fires	Office/Crib Room adjacent Dedicated Bunded Area; Vehicles
Water cart for fire fighting	Fires	Mine site various Pit volume
UHF Radio	Any	Vehicles

First Aid

WJ Murdoch and Co shall ensure that first-aid kits are maintained at the nominated site within work areas.

Activating the Plan

Who activates the plan? *Every employee or contractor on site has a responsibility to report incidents to their supervisor or if their supervisor is not contactable to report directly to the Director & admin staff via the Buckaroo MDL office (WJ Murdoch affiliate).*

The persons identified below have the responsibility to make sure actions in the plan are carried out.

NAME	POSITION	CONTACT PHONE NUMBER
Robert Murdoch	Director	0438 722 389
	MDL Admin Office	02 6373 3939
Alan Kemp	Production Manager (on site contact)	02 6373 6537
Kirsty Murdoch	Administration	0410 493 475

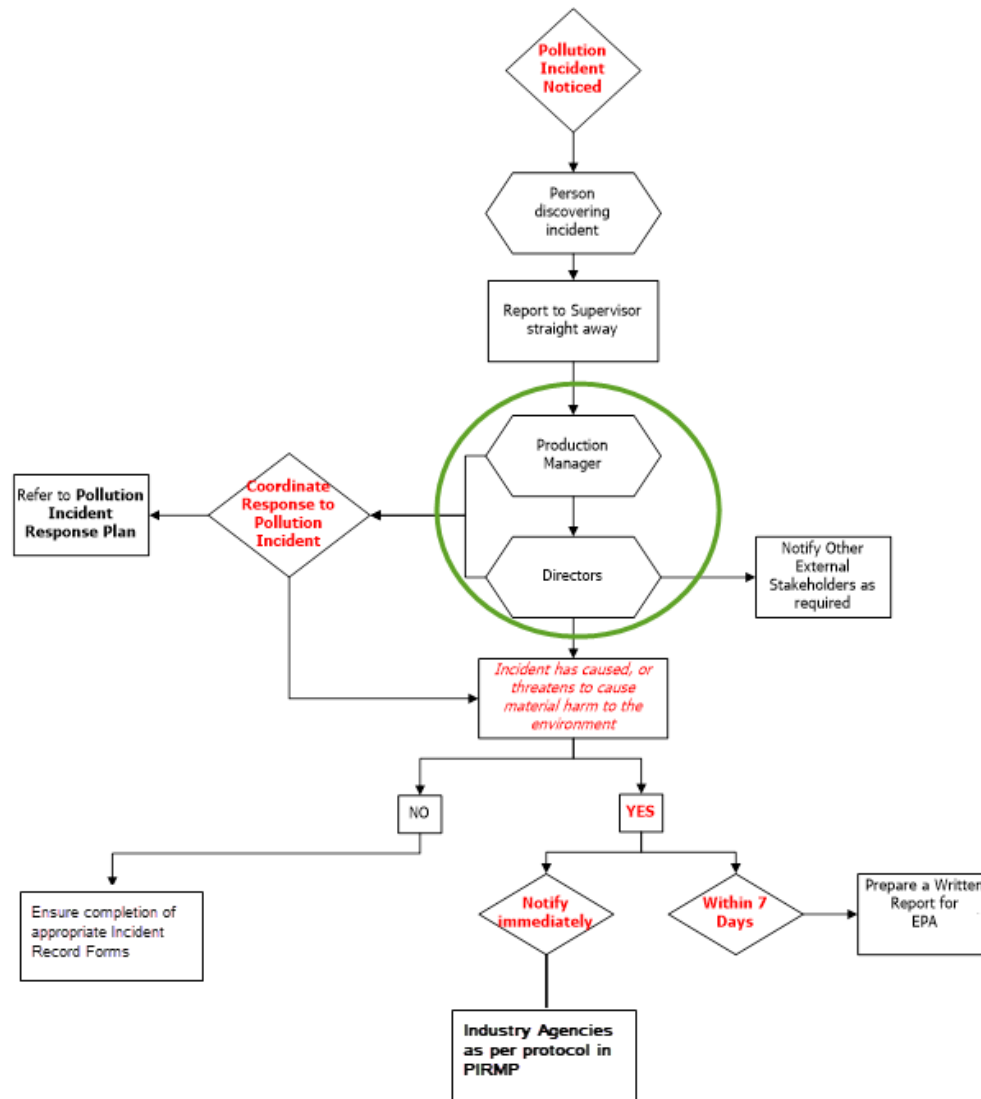


Figure 3: Incident Response Communication Protocol

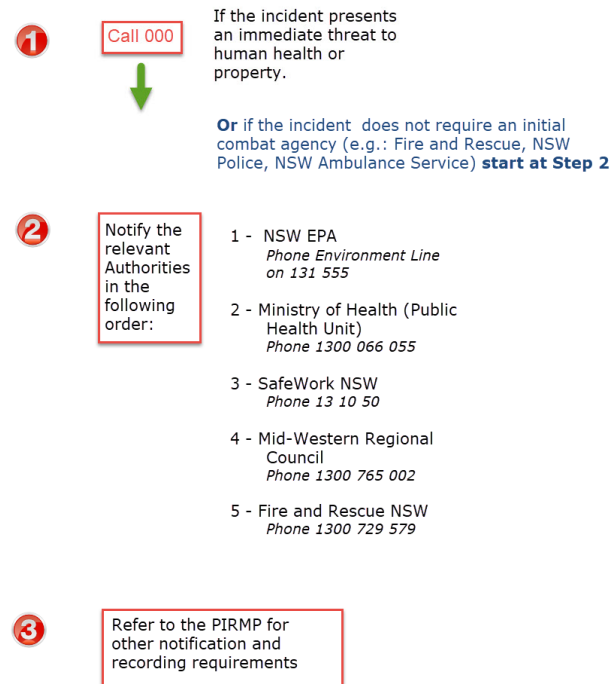


Figure 4: Notification Protocol for Industry Authorities for Pollution Incidents

FOLLOWING AN INCIDENT

Following a pollution incident at MDL Buckaroo the following actions will occur:

- Notification of relevant authorities (was the incident also notifiable under WHS Regulation? – notify accordingly)
- Debriefing with personnel directly involved in the pollution incident within 24 hours of the cessation of the pollution incident;
- Internal analysis of the pollution incident;
- Submission of a report to EPA on the pollution incident outlining the following;
 - Date, time and nature of the pollution incident;
 - Identifying the cause (or likely cause) of the pollution incident;
 - Describing what action has been taken to date; and
 - Describing proposed measure to address the pollution incident.
- Participate in any external investigation of the pollution incident;
- Review the PIRMP for effectiveness; and
- Communicate any changes to the PIRMP to staff.

Notifications

The following agencies are to be contacted relevant to the incident.

AGENCIES:

NAME	CONTACT PHONE NUMBER	
Environment Protection Authority	131 555	
Council	1300 765 002	02 6378 2850
Fire and Rescue NSW	02 9265 2999	In emergency call 000
SafeWork NSW	13 10 50	
NSW Resources Regulator	1300 814 609	

The following neighbours are to be notified in relation to relevant incidents (e.g.: dust, noise).

NEIGHBOURS:

NAME	CONTACT PHONE NUMBER
<i>See note below</i>	

No sensitive premises are located in close proximity that requires special notification procedures (such as schools and hospitals). Contact details for private stakeholders are maintained on site and not listed due to privacy. An email and telephone network for registered stakeholders to be notified prior to blasting incidents. As a shared user of the haul road, MWRC will be notified of any incidents and other activities. For water and hydrocarbon related pollution incidents the closest water user/landowner downstream of the operations will be notified of the incident (and any known leases of such land).

Staff Training

This PIRMP is to be included in the staff training program and visitor/contractor induction. The following training components detail pollution incidents and responsibilities under this PIRMP.

TRAINING	FREQUENCY
Induction for new workers	As required
Induction for new contractors	As required
Visitor induction	Initial visit (and as required)
Tool box talks	Biannual or more frequently if changes are made to PIRMP

Toolbox meetings forum will be used to introduce the PIRMP to employees. A copy of the plan will be made available to employees at the WJ Murdoch and Co crib room/Office and the MDL office and to be kept on the website.

Testing and Updates

A 'test' of the PIRMP using a scenario that addresses one of the identified key pollution incidents will be undertaken on an annual basis.

EXAMPLES OF SCENARIOS FOR TESTING	Aspect/Involvement
Confirm that the person responsible details and staff positions are up to date.	Administration Staff (update details of plan)
Confirm that relevant authority's phone numbers are correct.	Administration Staff (update details of plan)
Has training been effective?	Simulate advice that a pollution incident has occurred to quarry employee (operator). E.g.: Fuel spill entering watercourse.
Check equipment preparedness.	Water cart to be checked for condition of connection for fire hose etc.

A copy of this plan will be made available to members of the public on the MDL website:

www.mudgeedolomitelime.com.au

Also, WJ Murdoch and Co will provide copies on the plan without charge to any person who makes a written request for a copy.

Review

The PIRMP will be reviewed:

- Annually by WJ Murdoch and Co management;
- Within 3 months of any changes to licence conditions relating to pollution incidents or any modification to the conditions of the EPL, Development Consent &/or relevant tenure agreement;
- Following any pollution incidents at WJ Murdoch and Co;
- Following inspection and recommendations;
- If there is a key relevant change in site activities or legislation regarding pollution control.

Document version	Amendment	Date	Annual Review Due
004	Whole Document Format updated/ Annual review /test	7 Nov 2020	8 Nov 2020
003	Whole Document Format updated/ Annual review /test	7 Nov 2019	8 Nov 2020
002	Contact details updated -Annual review/test	8 Nov 2018	8 Nov 2019
001	All doc developed	8 Nov 2017	8 Nov 2018