

POLLUTION INCIDENT RESPONSE MANAGEMENT PLAN

MDL Buckaroo

Buckaroo Road (Lot 3 DP 619374, and Lots 102, 103, 110, 120 DP 755418)

EPL 2588



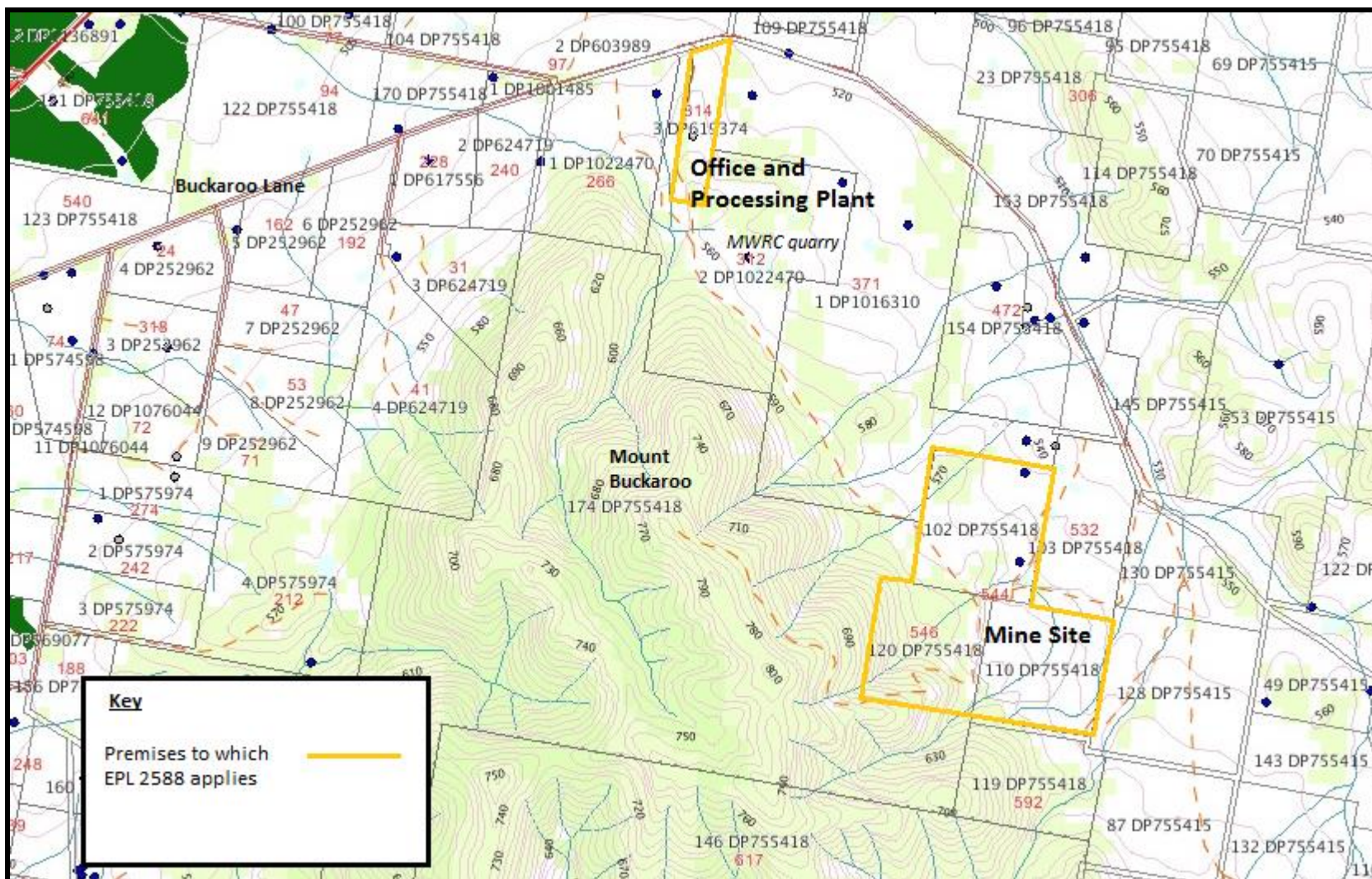


Figure 1: Environmental Protection Licence Area (EPL 2588)

Pollution Hazards – BUCKAROO

A pollution incident is required to be notified if there is a risk of 'material harm to the environment', which is defined in section 147 of the POEO Act.

“(a)...harm to the environment is material if:

*(i) it involves actual or potential harm to the health or safety of human beings or to ecosystems that is not trivial, or
(ii) It results in actual or potential loss or property damage of an amount, or amounts in aggregate, exceeding \$10,000 (or such other amount as is prescribed by the regulations), and*

(b) loss includes the reasonable costs and expenses that would be incurred in taking all reasonable and practicable measures to prevent, mitigate or make good harm to the environment.”

At the Buckaroo Lane, Mudgee quarry the following products are produced:

- Agricultural Lime (Aglime is made from naturally occurring Calcium Carbonate (CaCO₃)).
- Industrial Limestone
- Stonedust
- Bricklime
- MDL Dolomite
- Magrilime
- Calcium/Magnesium Blends
- Roadbase and Aggregates

The project area has two distinct operational components i.e. the infrastructure and processing areas and the Dolomite and Limestone Mine site. Activities that occur outside these two key components include: stockpiling of material (NB stockpile located at entry to site from Buckaroo Road within Lot 3 DP 619374), and use and maintenance of the haul road.

The Dolomite mine is predominately located within Lot 102 DP 755418. The Limestone mine is predominately located within Lot 110 DP 755418. Limestone quarrying is not currently carried out within Lot 103 DP 755418, though the land is disturbed in the Lot 103 through overburden stockpiling as well as being the site of the piped water outlet from the sump of the limestone mine and sediment basin. Similarly Lot 120 DP 755418 is also not mined, but is partially disturbed due to the haul road and overburden stockpiling. The site is affected by a second order watercourse originating from Mount Knowles.

MDL management have undertaken a review of activities and identified the major hazards associated with MDL's operations.

HAZARD	EXAMPLE	HUMAN / HEALTH / OR ENVIRONMENT	LIKELIHOOD	EVENTS THAT INCREASE LIKELIHOOD	PRE-EMPTIVE ACTIONS
Sediment discharge	Discharge to waters of untested/treated stormwater (1000L)	Environment	Low	Not maintaining sediment basins in accordance with EPL; Limited staff resourcing and training for environmental monitoring plan.	The basins are to be drained or pumped out as necessary to maintain the basin's design capacity within 5 days following rainfall.
Native habitat disturbed	Woodland on slopes in vicinity to work areas at risk of disturbance	Environment	V Low	Operating outside of approved areas.	Strict disturbance limits set with bunds.
Fire	Any smoke affecting populated area (rural residents in Buckaroo locality); dark, acrid smoke	Environment	Low	Equipment fault sparks fire;	Maintenance program for equipment; Daily checks; Keep appropriate fire control equipment.
				Uncontrolled detonation of explosives on site.	Follow Blast Management Protocols for safety; Engage trained contractors for control of events.
Spill of fuels and chemical	Not contained in a bunded area	Environment	Low	Fuel bund not maintained; Fuel and chemicals not stored in bund Old drums / waste oil not stored in bund	Weekly check of fuel and chemical storage by appointed person.
	Reaches drain or waterway whether or not there is standing or flowing water.			Careless use of fuels and chemicals on site	Training on fuel and chemical use protocol.
Excessive dust	Dust over Buckaroo Road causing traffic hazard	Human Health	Low	Hot dry windy conditions; Water cart not operating effectively or dust suppression on stockpiles.	Dust Control Measures adopted and implemented (TARP)
				Blasting in windy conditions	No blasts when in high wind and with contractors control on proceeding.

HAZARD	EXAMPLE	HUMAN / HEALTH / OR ENVIRONMENT	LIKELIHOOD	EVENTS THAT INCREASE LIKELIHOOD	PRE-EMPTIVE ACTIONS
Blast fume	Fume cloud leaves the premises not dispersed	Human Health	Low	Incorrect explosive composition	Explosive supplier/contractor ensures appropriate formulation;
				Moisture in blast holes	Check moisture levels – use contractor management procedures.
Incorrect disposal of waste	Chemical or putrescible waste disposed of on site	Human Health/ Environment	V Low	Failure of regular waste disposal; or unauthorised access and dumping (old tip nearby).	Ensure waste disposal procedures followed; Security fencing /signage provided to site.
Excessive Noise	Excessive noise affecting noise sensitive location (nearest resident)	Human Health	Low	Plant and equipment not operated correctly. Blast procedures not followed.	Training for operating to reduce noise. Carry out blasts during licenced time periods and appropriate meteorological conditions.

Inventory of Pollutants

POLLUTANT	MAXIMUM QUANTITY	LOCATION
Fuel	50,000L	Self Bunded tank at Processing Plant (Lot 3)
Grease and Oil	400L	Dedicated Bunded Area at Processing Plant (Lot 3)
Cleaning Fluids	Nil	<i>Buckaroo MDL facility as required</i>
Flocculants	Nil	<i>Buckaroo MDL facility as required</i>
Pesticides/Herbicides	Nil	<i>Buckaroo MDL facility as required</i>

Safety Equipment

SAFETY EQUIPMENT / DEVICE	FOR (Pollution Type)	LOCATION
MSDS (Material Safety Data Sheets)	Chemical or fuel spills.	Office adjacent/Crib Room Dedicated Bunded Area
Spill Kit <ul style="list-style-type: none"> • 2 bags of absorbent material; • 100 absorbent pads; and • 2 absorbent booms. 	Chemical or fuel spills.	Office/Crib Room adjacent Dedicated Bunded Area
PPE	Any	Personal Equipment issue from MDL Buckaroo Office; Crib Room, Vehicles
Fire Extinguishers	Fires	Office/Crib Room adjacent Dedicated Bunded Area; Vehicles
Water cart for fire fighting	Fires	Mine site various
UHF Radio	Any	Vehicles

Activating the Plan

Who activates the plan? *Every employee or contractor on site has a responsibility to report incidents to their supervisor or if their supervisor is not contactable to report directly to the Director & admin staff via the Buckaroo MDL office.*

The persons identified below have the responsibility to make sure actions in the plan are carried out.

NAME	POSITION	CONTACT PHONE NUMBER
John Sanderson	Safety and Compliance	0438 661 608
Michelle Beach	MDL Admin Office	02 6373 3939

FOLLOWING AN INCIDENT

Following a pollution incident at MDL Buckaroo the following actions will occur:

- Notification of relevant authorities;
- Debriefing with personnel directly involved in the pollution incident within 24 hours of the cessation of the pollution incident;
- Internal analysis of the pollution incident;
- Submission of a report to EPA on the pollution incident outlining the following;
 - Date, time and nature of the pollution incident;
 - Identifying the cause (or likely cause) of the pollution incident;
 - Describing what action has been taken to date; and
 - Describing proposed measure to address the pollution incident.
- Participate in any external investigation of the pollution incident;
- Review the PIRMP for effectiveness; and
- Communicate any changes to the PIRMP.

Notifications

The following agencies are to be contacted relevant to the incident.

AGENCIES:

NAME	CONTACT PHONE NUMBER	
Environment Protection Authority	131 555	
Council	1300 765 002	
Fire and Rescue NSW	02 9265 2999	In emergency call 000
Ministry of Health	(02) 9391 9000	
SafeWork NSW	13 10 50	
NSW Resources Regulator	1300 814 609	

The following neighbours are to be notified in relation to relevant incidents (e.g.: dust, noise).

NEIGHBOURS:

NAME	CONTACT PHONE NUMBER
<i>See note below</i>	

No sensitive premises are located in close proximity that requires special notification procedures (such as schools and hospitals). Contact details for private stakeholders are maintained on site and not listed due to privacy. An email and telephone network for registered stakeholders to be notified prior to blasting incidents. As a shared user of the haul road, MWRC will be notified of any incidents and other activities. For water and hydrocarbon related pollution incidents the closest water user/landowner downstream of the operations will be notified of the incident (and any known leases of such land).

Staff Training

This PIRMP is to be included in the staff training program and visitor/contractor induction. The following training components detail pollution incidents and responsibilities under this PIRMP.

TRAINING	FREQUENCY
Induction for new workers	As required
Induction for new contractors	As required
Visitor induction	Initial visit (and as required)
Tool box talks	Biannual or more frequently if changes are made to PIRMP

Toolbox meetings forum will be used to introduce the PIRMP to employees. A copy of the plan will be made available to employees at the MDL office and to be kept at the crib room on display.

Testing and Updates

A 'test' of the PIRMP using a scenario that addresses one of the identified key pollution incidents will be undertaken on an annual basis.

EXAMPLES OF SCENARIOS FOR TESTING	Aspect/Involvement
Confirm that the person responsible details and staff positions are up to date.	Administration Staff (update details of plan)
Confirm that relevant authority's phone numbers are correct.	Administration Staff (update details of plan)
Has training been effective?	Simulate advice that a pollution incident has occurred to quarry employee (operator). E.g.: Fuel spill entering watercourse.
Check equipment preparedness.	Water cart to be checked for condition of connection for fire hose etc.

A copy of this plan will be made available to members of the public on the MDL website:

www.mudgeedolomitelime.com.au

Also, MDL will provide copies on the plan without charge to any person who makes a written request for a copy.

Review

The PIRMP will be reviewed:

- Annually by MDL management;
- Within 3 months of any changes to licence conditions relating to pollution incidents;
- Following any pollution incidents at MDL;
- Following inspection and recommendations;
- If there is a relevant change in site activities or legislation regarding pollution control.

Document version	Amendment	Date	Annual Review Due
005	Whole Document Format updated	Sept 2018	1 Sept 2019
006	Contact details updated -Annual review/test	30 Aug 2019	1 Sept 2020
007	Contact details updated -Annual review/test	11 June 2020	1 Sept 2021
008	Contact details updated - Annual review/test	31 August 2021	1 Sept 2022
009	Annual Review/test	28 July 2022	July 2023
0010	Annual Review/test. Update contact details	31 August 2023	July 2024